


the

Pyramid Model in Nova Scotia



Nova Scotia
Pyramid Model

Promoting Social & Emotional Competence in Nova Scotia's Young Children

What is the Pyramid Model?

The Pyramid Model is a conceptual framework of evidence-based practices for promoting young children’s healthy social and emotional development. The Pyramid Model program uses a coaching model to provide guidance to families, Early Childhood Educators and other professionals and builds upon a tiered approach to providing universal supports to all children to promote wellness, targeted services to those who need more support, and intensive services to those who need them.

3

Intensive Intervention
This tier supports the **few** children who may require individualized and intensive supports which include planning with families to meet their needs and develop skills for understanding and responding to challenging behaviours.

2

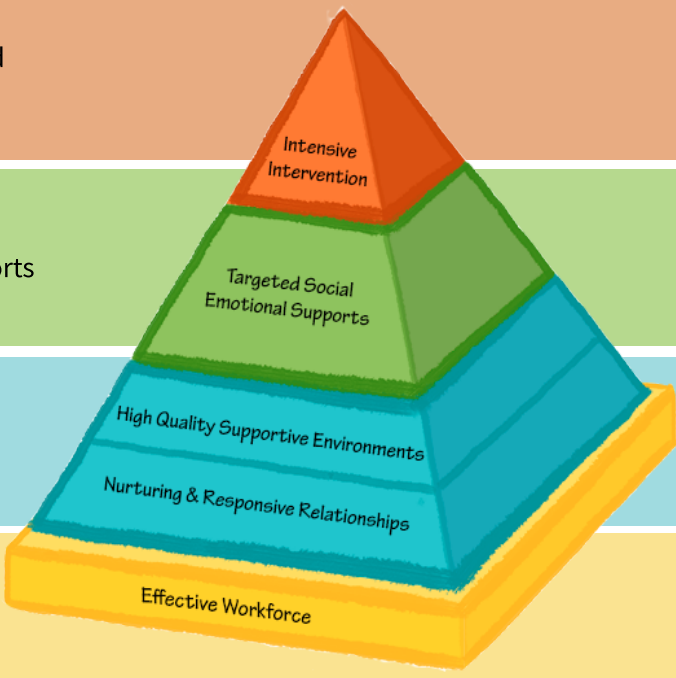
Targeted Social and Emotional Supports
This tier supports **some** children who are at risk of challenging behaviours by teaching them targeted social and emotional supports such as how to identify and express emotions, develop problem-solving skills, and playing cooperatively with other children.

1

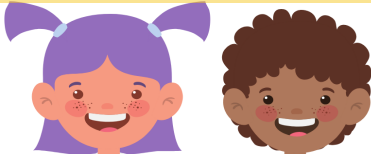
**High Quality Supportive Environments
Nurturing & Responsive Relationships**
This tier supports **all** children by providing nurturing and responsive relationships in safe and supportive environments.

★

Effective Workforce
The foundation of the Pyramid Model is a trained, effective workforce. This ensures that systems and policies are in place to support those working with young children by providing ongoing training and support to implement the Pyramid Model practices.



What are the benefits of Pyramid Model practices?



Benefits for children	Benefits for educators	Benefits for families
Enhances their social and emotional skills which include their ability to <ul style="list-style-type: none">Develop and maintain relationshipsIdentify and manage emotionsUse problem-solving skillsFollow directionsShare and take turnsUnderstand routines and transitionsDevelop self-control and coping strategies	<ul style="list-style-type: none">Creates positive, supportive relationships with childrenCoaching and support for learning and implementing new strategiesProvides training to support familiesProvides them with resources to share with families	<ul style="list-style-type: none">Creates positive, supportive relationships with childrenProvides resources and tips to promote social and emotional skills at homeHelps build partnerships between families and educators to support capacity in preventing and addressing challenging behaviours

Pyramid Model in Nova Scotia

Vision

All Nova Scotia (NS) ECEs and their programs have the capacity to support the social emotional well-being of children and their families in collaboration with a caring network of community partners.

Mission

To lead the development of a sustainable infrastructure to implement the Pyramid Model, a system of professional development practices for ECEs, that address the social emotional needs of NS children and their families.

Why implement Pyramid Model in Nova Scotia?

In 2017, children in NS were reported to be amongst the most vulnerable nation-wide in at least one area of their development, including their social competence domain and emotional domain. In response to this data, the province decided to implement the Pyramid Model in Regulated Childcare Centres (RCCs) and Pre-primary Programs (PPPs) to support educators working with young children and their families to develop and enhance their social and emotional development.

How is Pyramid Model implemented in Nova Scotia?

The foundation of the Pyramid Model is data-based decision making, which means using practical information and experiences to inform decision making and future implementation. The Pyramid Model uses a coaching approach to professional development where Inclusion Coaches directly support ECEs in their implementation of Pyramid Model practices.

The program is implemented by Nova Scotia Early Childhood Development Intervention Services (NSECDIS) through 28 service locations. NSECDIS is a province-wide provincially funded program which provides specialized services and supports to families of young children from birth to school entry who are experiencing delays or difficulties in their development.

Who is involved in the Pyramid Model implementation in Nova Scotia?

There are key persons and various roles involved in the Pyramid Model implementation. Collaboration and positive relationship building are key for the implementation's success.

Provincial Leadership Team	Plan, guide and support the implementation of the Pyramid Model in NS
Master Cadre	Early childhood professionals responsible for the delivery of Pyramid Model modules and training
Coach Team Leads	Work with Inclusion Coaches to enhance their experiential learning and support their coaching practice
Evaluation Team	Evaluate the implementation of the Pyramid Model in NS. Evaluation is conducted by the Early Childhood Collaborative Research Centre
Inclusion Coaches	Provide individualized on-site coaching to support Early Childhood Educators in implementation of programs and collect data to support decision making
Program/Regional Leadership Teams	Use data and experiences to inform ongoing implementation of Pyramid Model practices and strategies (formed by select RCCs or regions in that setting)
Implementation Programs	Pre-primary and Regulated Childcare Centres in NS who have committed to implementing the Pyramid Model program-wide
Early Childhood Educators	Early Childhood Educators who have committed to implementing the Pyramid Model in their rooms

Where can I find additional information and resources?

The following links provide further information about the Pyramid Model Framework and great resources.

- <https://challengingbehavior.cbcs.usf.edu/>
- <https://www.pyramidmodel.org/>

For more information please contact:

Email: info@nscecdis.ca

or

Toll free number: 1-844-292-6730