



CARE AND CONSTRUCTION

Research Evidence Informs Change in Nursing Homes: An Integrated Knowledge Translation Approach

Janice Keefe, Nova Scotia Centre on Aging, Mount Saint Vincent University

Debra Boudreau, Tideview Terrace

Marian Casey, Shannex

Ann McInnis, Nova Scotia Community College

Presentation at *Our Future Is Aging Conference: Current Research on Knowledge Policy and Practice*, Halifax, NS, June 16, 2016





Presentation Outline

- Care and Construction project
- iKT model
- Examples of research to practice
- Summary - factors supporting research to practice



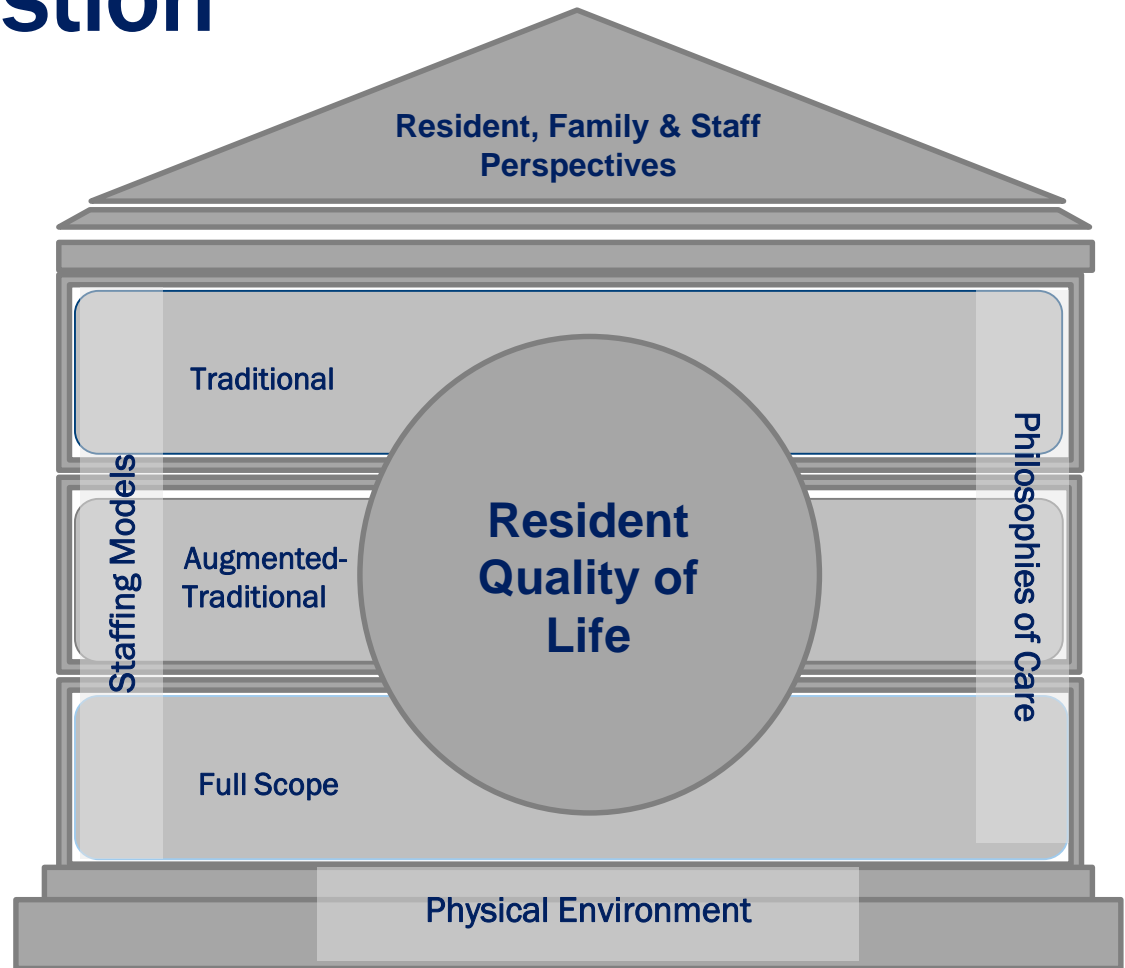
CARE AND CONSTRUCTION – RESULTS

Janice Keefe



Research Question

To what extent
and in what
ways do
differences in
the **nursing
home model of
care** impact
**resident quality
of life?**





Research Approach



Residents

- **Surveys**
- In-depth interviews



Family Members

- **Surveys**
- Focus groups



Staff

- Focus groups
- **Surveys with all staff**
- Surveys with senior administration



Nursing Home Context

- **Profiles**



Case Study

- Care constellations
- In-depth interviews
- Participant observation
- Activity monitoring
- Data collection over time



What Influences Quality of Life?

RESIDENT

- Marital status
- Health scale
- Homelikeness
- Personal relationships
- Staff-Resident bonding

FAMILY

- Resident cognitive status
- Homelikeness
- Family – Staff relationships
- Resident – Resident relationships

STAFF

- New-Full-scope
- Homelikeness
- Resident-staff relationships
- Role clarity
- Skill use
- Transformation leadership
- Resident challenging
- Job influence

```
graph TD; RESIDENT[RESIDENT] --> QOL((Resident Quality of Life)); FAMILY[FAMILY] --> QOL; STAFF[STAFF] --> QOL;
```

**Resident
Quality of
Life**



Three key results

RELATIONSHIPS

- Positive relationships support resident QOL

HOMELIKENESS

- Sense of homelikeness supports resident QOL

WORKING ENVIRONMENT

- Elements of the working environment support positive staff perceptions of resident QOL



Integrated Knowledge Translation

**IDEA and
DEVELOPMENT**

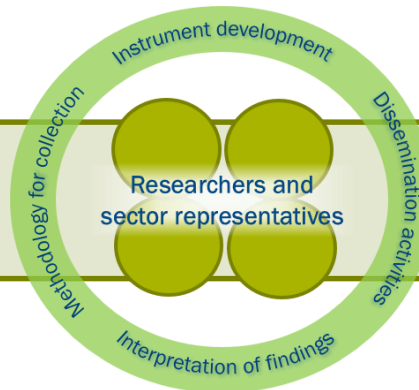
IMPLEMENTATION

**INTERPRETATION
and
DISSEMINATION**

Northwood
hosted
“research
day”
May 2008

Application
to CIHR
Nov 2010

Brochures
created
Winter 2014

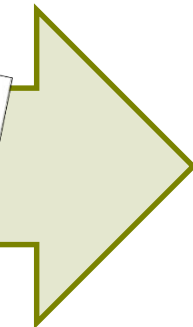


NSCA planning
workshop &
NSHRF funded
Building
Alliance
June 2009 –
Mar 2011

Care &
Construction
Project
launched
Apr 2011

Working
Groups
Apr 2011 –
Fall 2013

Workshop with
sector
representatives
Nov 2013





KNOWLEDGE USER PARTICIPATION – FROM IDEA THROUGH TO DISSEMINATION

Ann McInnis, NS Community College



KU Participation – From Idea through to Dissemination





Engage the sector

Workshop in collaboration with HANS

- Close to 70 representatives
 - Government/Nursing home/Education
- Designed with sector input
 - Model: What, So What, Now What
 - Format: Findings, reflection, panel, group work



Sampling of Other activities

- HR Reports on staff survey by facility
- Hosted Human resource workshop as a follow-up
- Host Café Scientifique to share with Public



Areas for Action - Relationships

POLICY

- Develop communication strategies
- Consult all perspectives

EDUCATION

- Share training resources
- Train in these areas:
 - Conflict management
 - Resident-centred care
 - Cultural diversity
 - Mentorship

PRACTICE

- Support resident-resident relationships
- Initiate family ambassador program
- Provide modeling & coaching
- Ensure staff have right fit



Areas for Action - Homelikeness

POLICY

- Develop a clear definition
- Incorporate into licensing & regulations
- Promote collaboration between departments

EDUCATION

- Encourage staff creativity
- Involve staff in changes

PRACTICE

- Consult residents and family
- Balance risks
- Engage in the surrounding community
- Adjust physical space



Areas for Action - Working environment

POLICY

- Align measures to be consistent with outcomes
- Review funding to meet resident-focused outcomes
- Review funding to support uptake of education

EDUCATION

- Provide ongoing education in resident-centred care
- Support public awareness

PRACTICE

- Adopt collaborative practice model
- Provide consistent staffing assignments
- Engage all partners in changes



VIEW FROM THE FACILITY

Debbie Boudeau – Tideview terrace

With input from

Josie Ryan, Northwood

Marion Casey, Shannex



Outcomes at the facility level

- **Research Shared Through:**
 - Client & Family Councils
 - Newsletters & Magazines
 - Internal Memos
- Researchers returned to give updates and provided promotional material on the outcomes
- Focus Groups with Clients, families, Volunteers and Staff to review results and identify changes





How Research Shaped

...understand the power of working towards building more positive and supportive relationships.

Homelikeness

- Catalyst to Re-focus attention on how Core Values affect QOL
- Internal Validation of the Meaning of 3 Themes
- Identified and implemented core behaviours/expectation that would support improvements in 3 Themes

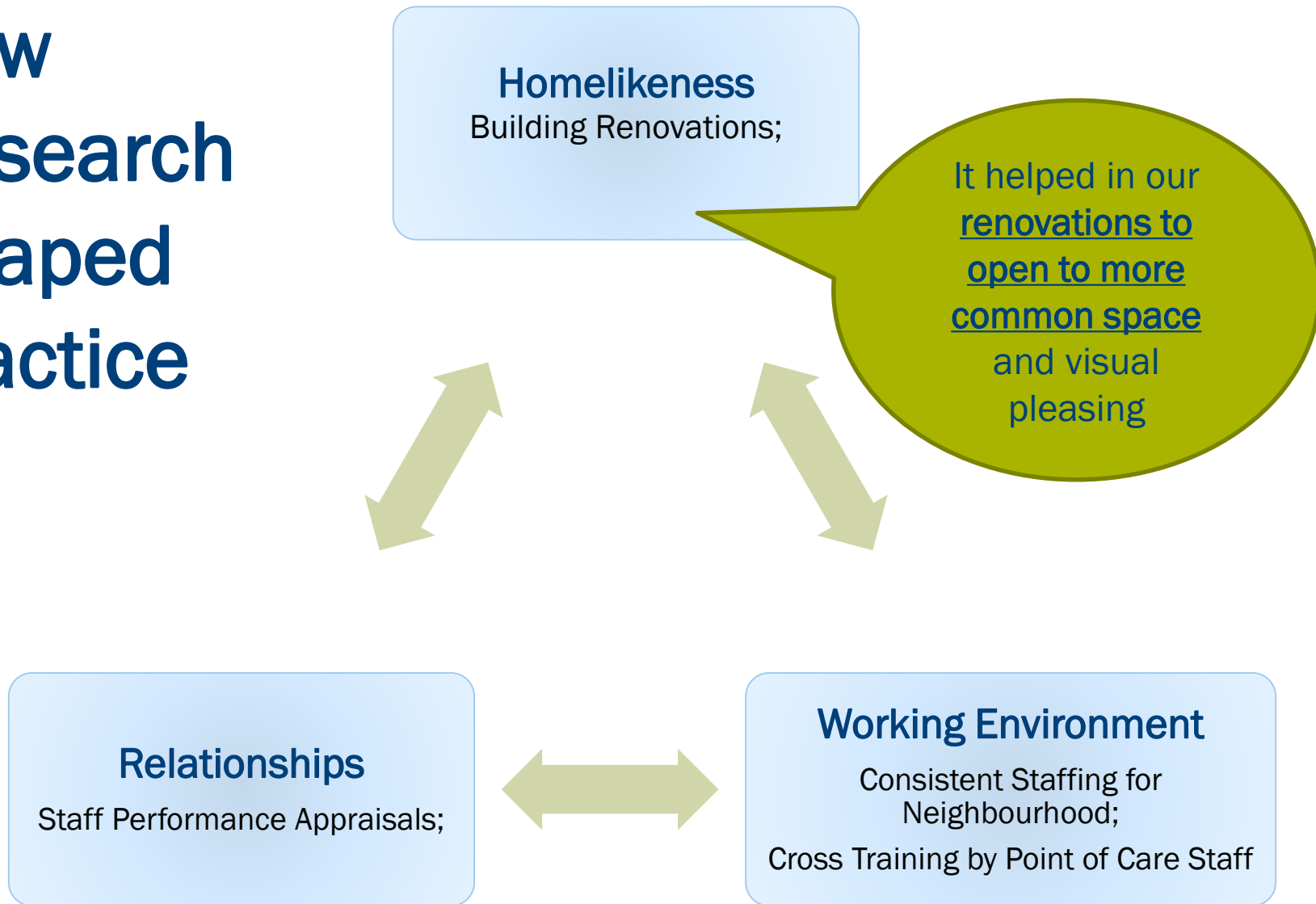
Relationships

Validation of Philosophy of Care

Working Environment



How Research Shaped Practice





Factors supporting research to practice

- Idea originated from the sector
- Sector representatives involved in planning/designing of study
- Respected Researchers & Knowledge Users
- Sector team members saw relevance and value of the project's outcomes
- Widespread dissemination including sector representatives sharing in the messaging
- Open and collegial working environment



In the words of one of our partners....

This project married research in a practical and meaningful manner that will affect the quality of life in nursing homes for years to come.



Acknowledgements

Funders



(FRN # 114120)



(Matching-2011-7173)

Researchers



Project Partners



Alderwood
Rest Home

Harbourview
Lodge

