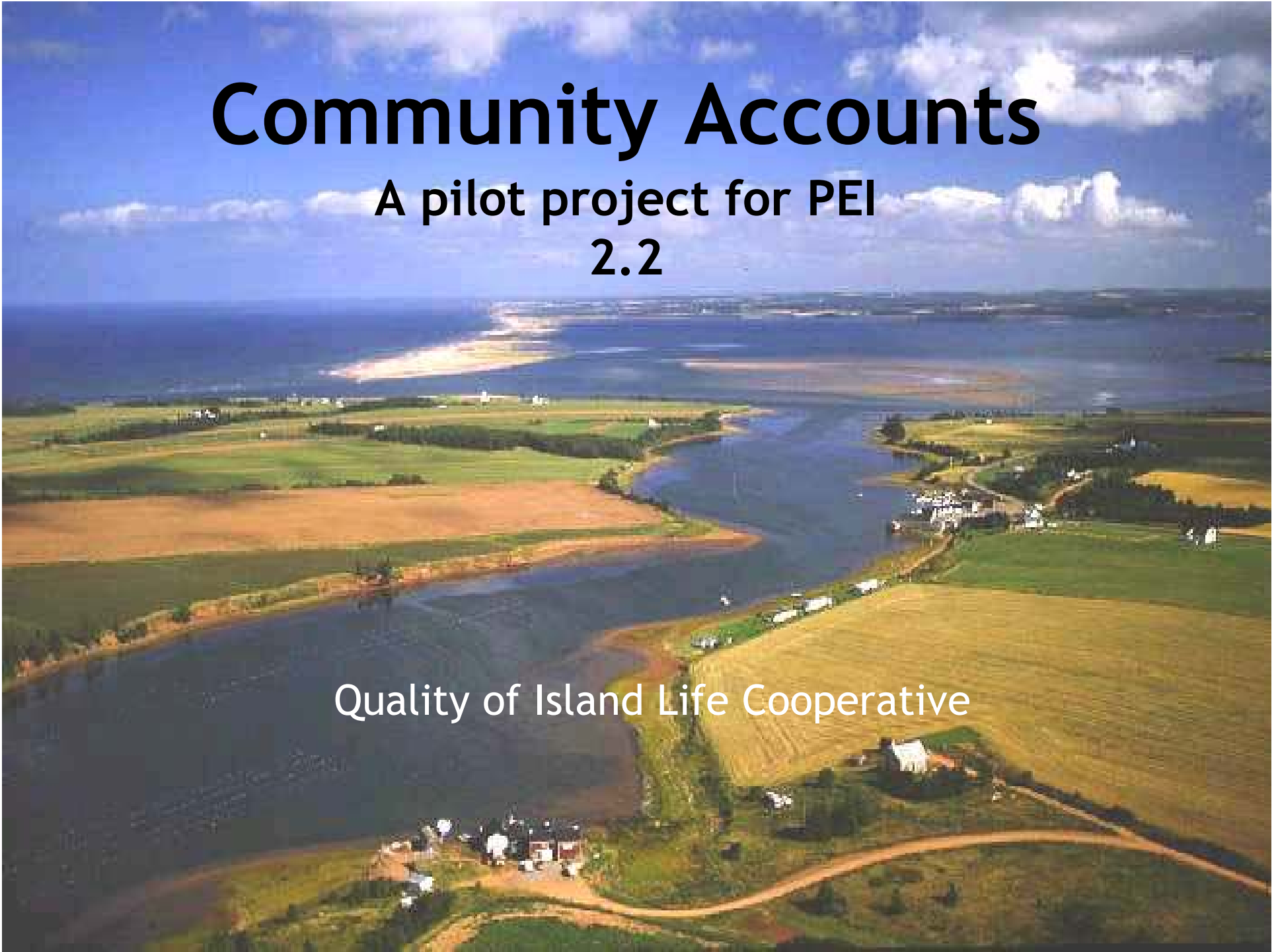


# Community Accounts

A pilot project for PEI

2.2

Quality of Island Life Cooperative



# Quality of Island Life Co-op

## *Our Purpose*

- ❖ Engaging people in conversations on what well-being and quality of life means to Islanders
- ❖ Turning data into tools people can use to understand how our Island is doing
- ❖ Planning where we want to go in the future

# Why measure Quality of Island Life ?

*Aren't we drowning in statistics already ?*

*Are they really meaningful ?*

*How can we make better use of data ?*

The Quality of Island Life Co-operative believes that we must capture the less tangible qualities of Island life in a way that can be incorporated into community decision making.

# PEI Community Accounts

## *the concept*

- Collect information through surveys on what constitutes quality of life
- Present this information to communities along with other statistics
- Empower communities to make informed decision making and to influence the policy development process

# From the Rock to the Sandbar

- N&L established user-friendly system of community accounts which provides information on domains of well-being at the community level
- QoIL Co-op collaborated with N&L Community Accounts to develop a similar system for PEI
- Institute of Island Studies at UPEI brought the partners together, recruited students and managed the research.
- An informal group of community leaders mobilized their communities and all partners collaborated as a team.



# Community Accounts

## A Project for Prince Edward Island

### COMMUNITY PARTNERS:

Quality of Island Life Cooperative (QoIL)

Institute of Island Studies (IIS)

Trout River Environment Committee (TREC)

Tyne Valley Municipality

Lennox Island First Nation

Stacy Enman (student - Phase 1)

Community Accounts of Newfoundland & Labrador

Timeline: February 2006 to September 2010

Funding from the Social Sciences and Humanities Research Council of Canada



**Social Economy and Sustainability Research Network**  
**Partenariat sur l'économie sociale et la durabilité**  
Bridging, Bonding, and Building / Renforcement des liens et des capacités



Home

1 Select Geography

2 Select Account

3 Select Information

Additional Features

Map Analysis Tool

## Community Accounts: Prince Edward Island Prototype

Contains a variety of information available at the provincial, county, lot and community level, as well as a custom assembled region.



Image: West River Bridge, Credit: (C) 1999 Province of PEI

**Community Accounts** is an innovative information system providing users at all levels with a reliable source of community, regional, and provincial data. [Click here for more information...](#)



[Atlantic Canada's Community Accounts \(prototype\)](#)

[www.communityaccounts.ca](http://www.communityaccounts.ca)

An initiative of the Government of Newfoundland and Labrador



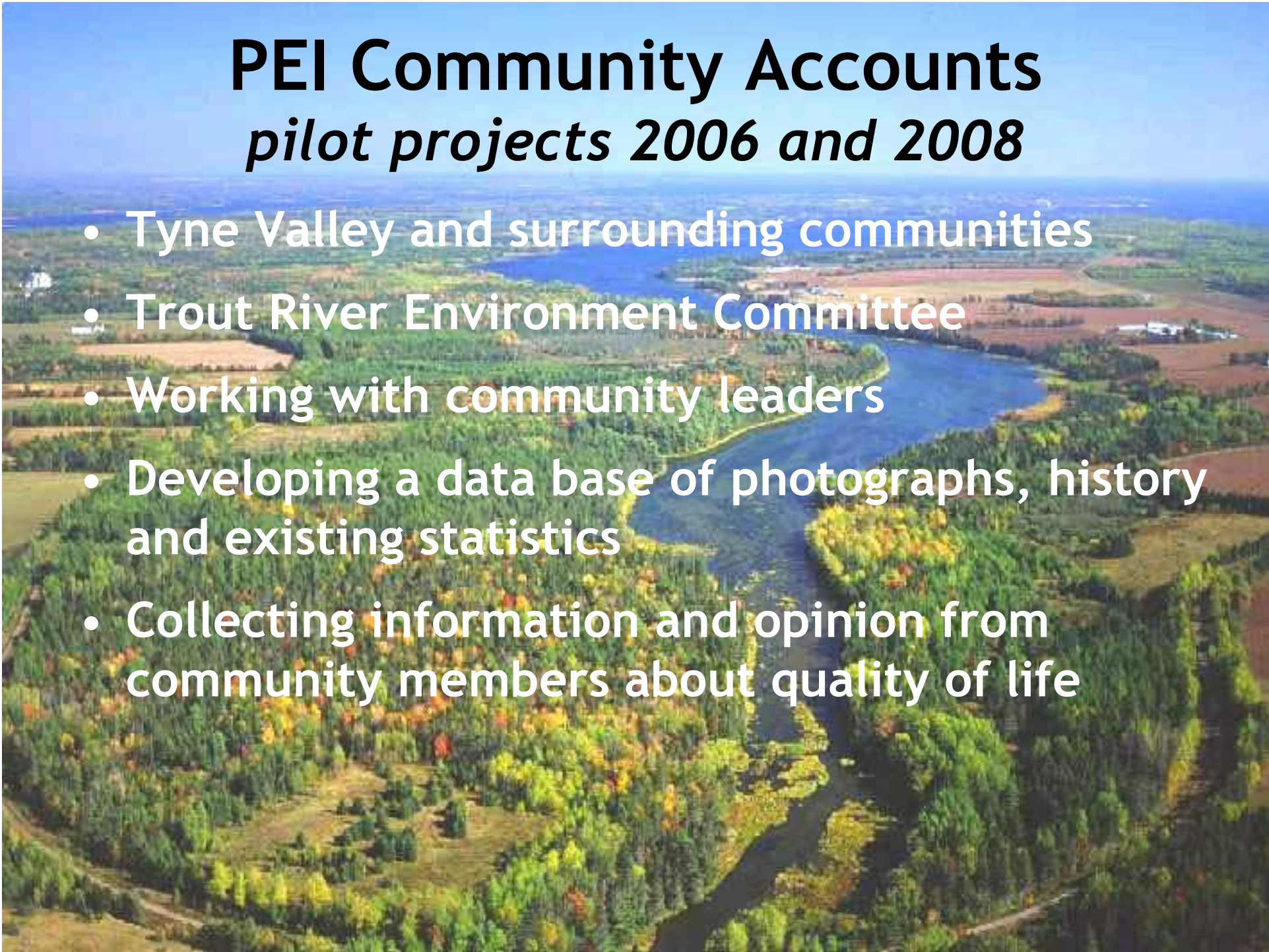
# Domains of Well-Being: A Web of Life



# PEI Community Accounts

## *pilot projects 2006 and 2008*

- Tyne Valley and surrounding communities
- Trout River Environment Committee
- Working with community leaders
- Developing a data base of photographs, history and existing statistics
- Collecting information and opinion from community members about quality of life



# **PEI Community Accounts**

## ***pilot project 2006-methodology***

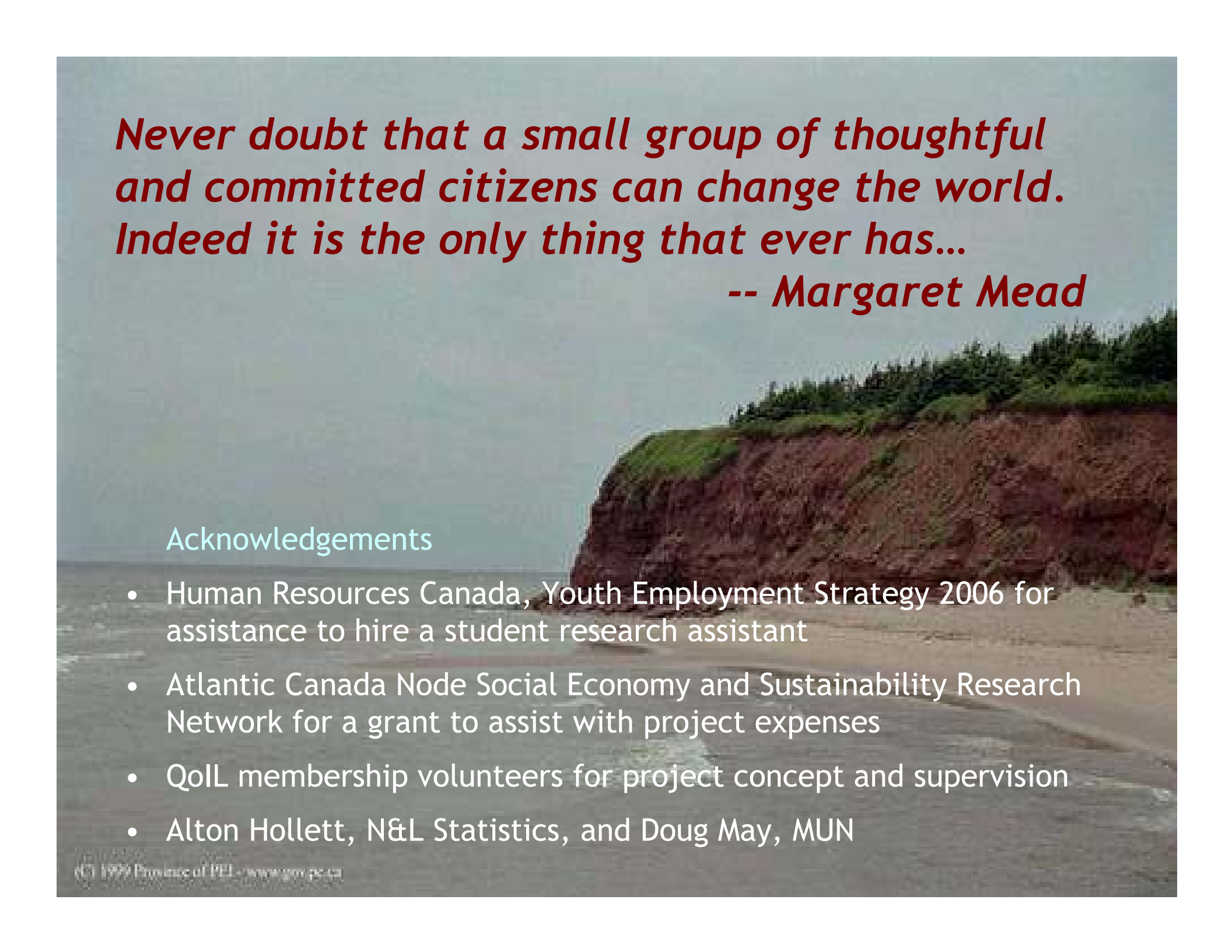
***in the words of our research assistant  
Stacey Enman***

- researched the history of the communities in and around Tyne Valley
- wrote a research paper on the communities
- assembled available statistics for the various communities of Tyne Valley
- developed brochures and bulletins for public awareness
- developed a survey on quality of life parameters
- conducted participant recruitment and created consent forms
- administered survey by telephone, mail and personal interviews
- compiled survey data

# PEI Community Accounts

## *pilot project 2006 - preliminary findings*

- Most important parameters are friendliness, closeness to family, community spirit, peace and quiet
- Economic considerations, jobs are not primary concerns
- Appearance of the community is important but other environmental issues were rarely raised
- Health Services or potential lack of local access to them, a concern



***Never doubt that a small group of thoughtful  
and committed citizens can change the world.  
Indeed it is the only thing that ever has...***

***-- Margaret Mead***

### Acknowledgements

- Human Resources Canada, Youth Employment Strategy 2006 for assistance to hire a student research assistant
- Atlantic Canada Node Social Economy and Sustainability Research Network for a grant to assist with project expenses
- QoIL membership volunteers for project concept and supervision
- Alton Hollett, N&L Statistics, and Doug May, MUN