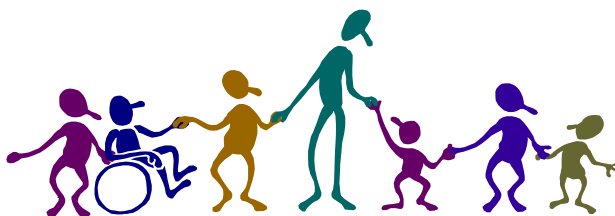


# Fall 2011

## Professional Development Workshops For Early Childhood Educators

Mount Saint Vincent University  
Department of Child and Youth Study



Mount Saint Vincent University, Child and Youth Study Department holds Professional Development workshops and training opportunities for those currently working in the field of Early Childhood Education.

*Funding for these workshops is made possible through the Federal/  
Provincial/Territorial Early Childhood Development Agreement  
coordinated by the Nova Scotia Department of Community Services.*



### SCENT FREE ENVIRONMENT

*Please help us to accommodate those who are chemically sensitive  
to fragrances & other scented products.  
Thank you for not wearing perfume or scented products.*

Mount Saint Vincent University  
166 Bedford Highway  
Halifax, NS, B3M 2J6



*Department of Child and Youth Study*

<http://www.msvu.ca/earlychildhoodworkshops>

# **Reimbursement Program for ECE's**

## **Early Childhood Education Assistance & Continuing Education Reimbursement Programs**

**Are you presently working in a licensed child care centre or  
family home daycare centre in Nova Scotia?**

**Are you considering a continuing education course**

***OR***

**Are you a recent graduate of an approved Early Childhood  
Education program & received financial assistance  
through the Nova Scotia Student Assistance Program?**

You may qualify for the Nova Scotia Department of Community Services *Early Childhood Education Assistance Program* or *Continuing Education Program*.

The Early Childhood Education Assistance program offers financial support through a debt reduction incentive. The Continuing Education Program offers reimbursement for continuing education courses offered through approved early childhood training institutions in Nova Scotia, & some outside the province. For more information on eligibility & requirements of these programs, & the Recruitment & Retention Strategy, please visit the DCS website:

**<http://www.gov.ns.ca/coms/families/provider/RecruitmentRetention.html>**

# PROFESSIONAL WORKSHOP SERIES

## Fall 2011

### ***IMPORTANT REGISTRATION INFORMATION:***

Early registration is recommended as workshop space is limited.

**Registration does not confirm acceptance into the workshop**

**Please Note:** Registration & payment is required to secure a spot. Registration may be mailed in, or dropped off. Registration **cannot** be taken by phone or email.

Registration is on a first-come basis, & all applicants will be notified by telephone or email to confirm their space in the workshop, or to notify if their workshop is full.

***Please contact us if you do not receive any notification of your placement within a workshop.***

#### **PAYMENT**

We accept personal checks, money orders or cash. Unfortunately, we cannot take credit card payments.

#### **WORKSHOP CANCELLATIONS & REFUNDS**

***Advance cancellation notice of a minimum of 14 days before the workshop is required for a refund.***

***Non-attendance does not constitute cancellation- & fees cannot be refunded.***

### **WORKSHOP CERTIFICATES & ATTENDANCE**

A ***Certificate of Attendance*** (including number of workshop contact hours) is given out for all workshops or workshop series. ***Substitutions:*** If you are sending a substitute for a workshop we require notification with the name of the substitute at least 24 hours in advance to prepare the certificate.

***PARTICIPANTS MUST ATTEND THE FULL SCHEDULED WORKSHOP SESSION  
IN ORDER TO RECEIVE A CERTIFICATE.***

***LEAVING EARLY: PARTICIPANTS LEAVING A WORKSHOP EARLY  
WILL NOT RECEIVE A CERTIFICATE OF ATTENDANCE***

***Workshops begin promptly– please arrive in sufficient time  
so as not to disturb the session in progress!***

Visit [www.msvu.ca/Campus\\_Tour/campusmap.PDF](http://www.msvu.ca/Campus_Tour/campusmap.PDF) for a MSVU campus map.



Workshop information & registration forms are also available on our website. Please contact the Nova Scotia Department of Community Services for any questions on the equivalency accreditation process. A light lunch is provided for all full day MSVU location workshops.

## Workshops:

### Sydney NS

**\*Practical Strategies for Incorporating Children with Autism in the Inclusive Child Care Environment (Cambridge Suites, Sydney NS)**

**Dates:** Saturday September 24, 2011 & Sunday September 25, 2011 Sydney, NS

*\*Day 2 has been approved by the NS Department of Community Services for equivalency accreditation of partial fulfillment (2 hours) of section 36.C of the Daycare Act & Regulations. Due to the workshop structure, participants are strongly encouraged to attend BOTH days for maximum benefit— however, all participants MUST attend Day 1, as Day 1 is a prerequisite for Day 2.*

**Presenters:** Nicki Beck-Chisholm & Erin Dooley

**Time / Location (Sydney):** Saturday September 24, 2011 9am–4 pm & Sunday September 25, 2011 9am–1 pm

**Cambridge Suites**, 380 Esplanade, Sydney NS Celtic Room **Cost:** \$60 for the two days

**Total PD hours:** 10 hours

#### **Description:**

This is a 1.5 day presentation which will include a brief overview of autism, its characteristics, & the implications for the early childhood environment. Practical strategies will be discussed for addressing challenging behaviours using functional assessment. Daily routines such as circle, free play, & transitions will be targeted, & participants will leave with hands on materials ready for implementation. Throughout the sessions, participants will have the opportunity to view & explore multiple tools & supports including resource materials, tasks, visuals, social stories & adaptations.

**Presenter Bios:** *Erin Dooley*, BAA (CHYS) has numerous years working in the field of Autism. She has worked in the Program For Children With Autism at MSVU Child Study Centre for the past 6 years. She works privately designing & implementing programs for children & families living with Autism.

*Nicki Beck-Chisholm*, MA(CHYS), has been working in the early childhood education field for over 15 years & is currently a full time faculty member at the Nova Scotia College of Early Childhood Education. Nicki has held a wide variety of positions including early childhood educator, special needs resource teacher, professional development facilitator, professor & instructor. Her particular interest is in the area of children with special needs & their families & advocating for quality child care in Nova Scotia.

## Sydney NS

### **\*Work Jobs Language & Math Activities, and Activities for Quiet Time (Days Inn, Sydney NS)**

**Date:**

Saturday October 29, 2011  
Sydney, NS

*\*Equivalency hours: This workshop has been approved by the NS Department of Community Services for equivalency accreditation of partial fulfillment (6 hours) of section 36.C of the Daycare Act & Regulations.*

**Presenter:** Kathy Black

**Time / Location (Sydney):** 9 am-4pm **Days Inn**, 480 Kings Road Harbour Room Sydney NS **Cost:** \$40

**Total PD hours:** 6 hours

**Description:** The Work Jobs Language & Math Activities is hands-on where participants will create & explore open ended language & math activities. Each activity is created with familiar recycled materials. Work job activities can enhance your daily early childhood learning environment, during free play & quiet time.

Not all children sleep during nap time, however all children should be encouraged to have a rest period or quiet time throughout the day. Participants will discuss various quiet time activities that could be offered to children, throughout various times of the day.

**Presenter Bio:** *Kathy Black* has worked 15 years in early childhood centres. She was a teacher at the Child Study Centre at Mount Saint Vincent University for twelve years, where she planned & implementing activities for children 2-5 years of age. In 2005 she began facilitating curriculum workshops to early childhood educators throughout Nova Scotia. Kathy joined the Department of Community Services in 2002 as an Early Childhood Development Officer, & in 2009 resumed the role as Licensing Officer.

## Sydney NS

### **\*Children, Spaces and Relationships: Building Quality Early Childhood Programs**

**Date:**

Saturday  
October 15, 2011  
Sydney, NS

*(This workshop is intended for those who are seeking advanced-level of information on this topic) \*Equivalency hours: This workshop has been approved by the NS Department of Community Services for equivalency accreditation of partial fulfillment (3 hours) of section 21A of the Daycare Act & Regulations.*

**Presenter:** Shelley Thompson

**Time / Location:** 9am-4pm **Cambridge Suites**, 380 Esplanade Celtic Room Sydney **Cost:** \$40.00

**Total PD hours:** 6 hours

**Description:** In this workshop participants will be encouraged to think about the benefits of quality child care for children, their families & the wider community. Participants will reflect upon the role they play in creating quality child care environments & to think through what they believe about 125

will be discussed, & we will explore the learnings from Reggio Emilia & other approaches to ECE & how we can use them to develop & build upon our own practices & beliefs.

**Presenter Bio:** *Shelley Thompson* has been in the Early Childhood Education field since the early 1990s. Since then she has held a variety of positions related to early childhood education & care & currently works for the Department of Community Services in the area of policy development related to licensed child care.

## **\*Promoting Positive Behaviour in Child Care Settings**

### **Dates:**

Wednesdays: Sept. 28,  
Oct 12, Oct 26, Nov 9,  
Nov 23, & Dec 7, 2011

*\* Equivalency hours: This workshop has been approved by the NS Department of Community Services for equivalency accreditation of partial fulfillment (4.5 hours) of section 36.C of the Daycare Act & Regulations.*

**Co-Presenters:** Nicki Beck-Chisholm & Debbie Thompson

**Time / Location:** 6pm-9pm Evaristus Hall, room 414 all days **Cost:** \$90.00 **Total PD hours:** 18 hours

**Description:** “*Promoting Positive Behaviour in Child Care Settings*” is designed to assist early childhood care providers in providing positive & appropriate experiences for the wide variety of children they serve, including those with challenging behaviours. Presenters will deliver this workshop in 6 sessions over 12 weeks. The modules will guide early childhood educators in creating supportive, quality environments that facilitate learning while fully including children with challenging behaviours. Module 1 will focus on problem behaviour, typical behaviour & developmentally appropriate practice. Module 2 dives into challenging behaviour focusing on functional assessment & observation. Module 3 examines methods of prevention, monitoring change, & the importance of a teaming approach. Participants will engage in in-depth discussions, share personal experiences & work together to provide solutions to existing difficulties within some of the participant’s centres. Participants should be prepared as there will be some required prep work outside of module contact time.

Due to the structure of the workshop, participants are strongly encouraged to ensure they attend all sessions, & reimbursements cannot be issued for any missed sessions.

**Presenter Bios:** *Debbie Thompson* is a Mount graduate, with a Degree in Child & Youth Study *BAA (CHYS)*. She has always had a passion for teaching & has worked in the field of Early Childhood Education (ECE) for over ten years. Debbie started her career at Wee Care Developmental Centre as a teacher in the integrated preschool, becoming their first Resource teacher, having helped the center develop & implement the position. She has created & delivered many workshops on various topics including *Transitions, Circle time, Creative learning, Music & Movement* for the Nova Scotia College of Early Childhood Education. Debbie has also developed & delivered custom workshops at the request of many preschools. She currently works at the IWK Health Centre as a Program Implementer for the Early Intensive Behaviour Intervention program (EIBI) for children with Autism, where she continues to work closely with preschools, children & families.

*Nicki Beck-Chisholm*, MA(CHYS), has been working in the early childhood education field for over 15 years & is currently a full time faculty member at the Nova Scotia College of Early Childhood Education. Nicki has held a wide variety of positions including early childhood educator, special needs resource teacher, professional development facilitator, professor & instructor. Her particular interest is in the area of children with special needs & their families & advocating for quality child care in Nova Scotia.

## Basic Management Development for ECE's \*\*

**Dates:** Saturdays;  
October 15, November 19  
& December 3, 2011

**\*\*This workshop qualifies for the Nova Scotia Department of Community Services reimbursement Continuing Education Program. For more information on eligibility & requirements, please visit the DCS website: <http://www.gov.ns.ca/coms/families/provider/RecruitmentRetention.html>**

**Co-Presenters:** Susan Willis, Shelley Thompson & Denise Stone

**Time / Location:** 9am-4pm Evaristus Hall room 111 all days October 15, November 19, & December 3, 2011

**Cost:** \$90.00 **Total PD hours:** 21 hours

**Description:** is an 21 hour, three day workshop series. that will run on three full Saturdays from 9 am-4 pm in Halifax. This program is intended to provide an *overview* of basic centre administration knowledge to **Early Childhood Educators who are NOT YET Directors**, but are interested in developing the necessary skills required to work in *administrative positions* in their centres. However, these workshops are available to anyone in the child care field & *may* offer new information, ideas & insight to those currently in administration positions within the centre.

This program is designed to be taken inclusively—although participants may register for individual sessions. The cost is \$90 for the complete 3 day workshop program **OR** individual sessions can be taken at a cost of \$35 *per each full day session*. You will examine a range of issues related to areas of effective management & administration in early childhood centres including:

**Session 1: Saturday October 15, 2011;** Team building, staff evaluation, providing effective mentoring, ethics & professionalism, developing quality programs & including families in the early childhood environment. *Presenter: Susan Willis- Willis & Associates*

**Session 2: Saturday November 19, 2011;** Overview of current government structure regarding regulated child care & the role of the consultation with respect to program quality & licensing requirements. Leadership skills & policy development tools to consider when problem solving sensitive topics with staff & parents, such as behavior guidance & inclusion of children with special needs. *Presenters: Shelley Thompson & Denise Stone*

**Session 3: Saturday December 3, 2011;** Budgeting & finance, public relations, marketing / strategic planning. *Presenter: Susan Willis- Willis & Associates*

**Presenter Bios: Denise Stone** (BCS) has been in the field of Early Childhood Education for over 20 years. A graduate of MSVU with a Bachelor of Child Studies & Master of Education degrees, she has worked in several provinces, & held a wide variety of positions including supervision of child care programs, early intervention, teaching ECE courses, workshop delivery & in licensing. Her main areas of concentration include children with special needs, behaviour guidance & human relations.

**Shelley Thompson** has been in the Early Childhood Education field since the early 1990s. Since then she has held a variety of positions related to early childhood education & care & currently works for the Department of Community Services in the area of policy development related to licensed child care.

**Susan Willis** is the Executive Director of Point Pleasant Child Care Centre, a non profit organization with three locations in Halifax. She is President of Willis & Associates, Early Learning & Care Consultants & part time faculty at the Nova Scotia College of Early Childhood Education (formerly known as St. Joseph's College of Early Childhood Education). Susan is a long time advocate for quality early learning & care programs for young children.

## **Fetal Alcohol Spectrum Disorder: Strategies & Interventions**

**Date:**  
Saturday October 1 & Saturday October 22,  
2011

**Co-Presenters:** Debbie Thibault & Sharon Dolliver

**Time / Location:** 9am-4pm Evaristus room 108 both days **Cost:** \$60.00 **Total PD hours:** 12 hours

**Description:** Day One-Morning Session of this workshop will raise awareness of Fetal Alcohol Spectrum Disorder....what it is, how to recognize a child who may have FASD & define primary & secondary disabilities which a child with FASD may experience. The afternoon will provide an opportunity to identify & develop skills & strategies required to work with children who have Fetal Alcohol Spectrum Disorder. Emphasis will be upon working with children in a daycare/preschool environment.

Day Two morning will provide an opportunity to review the basics of Day One & examine which strategies worked, which ones didn't, challenges to consider, successes to celebrate. The afternoon session will provide up-to-date information & research on Fetal Alcohol Spectrum Disorder from a Canadian perspective.

**Presenter Bios:** *Debbie Thibault* is the Coordinator of Training for the Federation of Foster Families of Nova Scotia & previous Owner of Deborah Thibault Training & Consulting. She has been an adult educator for over 10 years & assisted in the development & publication of the *Fetal Alcohol Syndrome/Fetal Alcohol Effects Training Program for Foster Parents*, a training program which was developed in 2001 with a financial contribution from the Population & Public Health Branch, Health Canada. She was also a member of the VON Advisory Committee during the development & publication of *Let's Talk FASD: Parent Driven Strategies in Caring for Children with FASD*.

*Sharon Dolliver* is a foster parent with over 12 years experience fostering a sibling group of three who have varying degrees of Fetal Alcohol Syndrome/Effects. As well, Sharon has been an adult educator for the Federation of Foster Families for over 10 years presenting parenting programs to foster parents & staff on behalf of the Federation & the Department of Community Services.

Since 2002, both Debbie & Sharon have facilitated workshops on Fetal Alcohol Spectrum Disorder, individually & as a training team, throughout the province to birth parents, foster parents, adoptive parents, prospective adoptive parents, child welfare social workers, community groups & elementary educational staff.

## **Regulations = Quality? No! It's Much More Than That.**

**Date:** Saturday September 24 &  
Saturday November 5, 2011

**Co-Presenters:** Liz Hicks & Shannon Harrison

**Time / Location:** 9am-4pm Evaristus Hall room 401 both days **Cost:** \$60.00 **Total PD hours:** 12 hours

**Description:** We all talk about having high quality child care programs, but do you know what it looks like? Are you up to examining your practice & programs? Are you a child care worker, or are you an early childhood educator? What does an early childhood educator mean? Are you walking the talk?

We will discuss & answer these questions over two days, using an assessment tool (ECERS-R & ITERS-R) to help us chart our journey. Be prepared to examine what you do & why. Prior to the second session, participants will be expected to spend some time assessing their centres in several areas including environment, program, materials, & staff-child & inter-staff interactions. Observations will be explored on day two, where we will discuss how to overcome any barriers or challenges, & create strategies & plans for enhancing the quality of our programs.

**Presenter Bios:** *Liz Hicks* is a private consultant with Beacon Of Quality. She has been working in early childhood education for 29 years in various capacities - teach, owner, Director of a part day program, & inclusion facilitator for Partnerships for Inclusion. She has presented many workshops, & professional development opportunities through out Nova Scotia, PEI, & New Brunswick. She is passionate about providing the best quality programs & learning opportunities for all children!

*Shannon Harrison* works in the toddler program at Point Pleasant Child Care Centre in Halifax. She has 22 years of experience in early childhood education & has also worked for Partnerships for Inclusion. She treasures the wonder & joy that she sees every day through the eyes of the children.

## **An Onsite & Online series: Emergent Curriculum in a Supportive Environment Series**

### **Dates:**

Onsite at MSVU; Saturday Oct. 15 & Nov. 26, 2011 & Online; Tuesday evenings Oct. 25 & Nov. 8, 2011

**(Please Note– the Oct. 15, 2011 session is essentially a repeat of the session *Emergent Curriculum in the Early Childhood Setting: Inspirations & Practicalities, & Documentation* from May 14, 2011**

*\*Equivalency hours: This workshop has been approved by the NS Department of Community Services for equivalency accreditation of partial fulfillment (5 hours) of section 36.C of the Daycare Act & Regulations.*

**Presenter:** Susan Stacey

**Time / Location:** Onsite at MSVU: Saturday October 15, 2011 9am-3:00pm & Saturday November 26, 2011 9am-12pm. Evaristus Hall room 401 both days AND Online Tuesday evenings; October 25 & November 8, 2011 6:30 pm-8:30 pm **Cost:** \$60.00 **Total PD hours:** 12 hours

**Description:** Emergent Curriculum, at its best, requires early childhood practitioners to be open in their thinking & responsive to children's thoughts, ideas & questions. This form of early childhood practice is a collaboration between adults & children that provides for inquiry, & can be considered a creative act rather than a 'script.' This workshop will tell the stories of two projects, the struggles & successes involved, & the teachers who led them. We will also examine the practicalities that must be considered when organizing an early childhood programme in response to children's emerging interests & questions.

For early childhood practitioners, it can be challenging to articulate why we do what we do, & why we use emergent curriculum. Documentation is one way of making our curriculum, the child's thinking, & the teacher's voice, accessible to others. It allows us to make children's learning visible, validates our work, & enables children to revisit their previous ideas. In the afternoon, we will look at various ways of documenting children's work, including log books, curriculum paths, & documentation panels. Participants will have a chance to experiment with the language of documentation during small group work, & will consider the starting points with which to begin documentation in their own setting.

This workshop series will begin, & conclude, with two onsite Saturday sessions at MSVU. The group will also meet twice using online sessions that will allow them to experiment, try out & implement strategies & ideas discussed in the onsite workshop. These online sessions will provide a dialogue support group to allow participants to give & receive feedback on what strategies they are trying, their challenges or successes, & to be given some support & assistance as they begin their journey.

Participants will attend the first 5 hour Saturday workshop at MSVU. This day will include:

Introduction to the foundations of emergent curriculum, & documentation. Team-building & opportunity to form cohorts, based on geographical areas. A demonstration of how participants will use Moodle will also be given.

Participants will meet twice Online (using Moodle), with the instructor & group, for 2 hours each). During these 5 weeks, participants will be expected to:

Observe for children's ideas & theories, & record these observations. Build upon these observations by using techniques introduced in previous face-to-face meeting. Share their work & ask questions during online meetings. Produce documentation to be shared in the final face-to-face onsite Saturday session (3 hours).

This workshop is recommended for those who are in the process of experimenting with emergent curriculum, or who are ready to begin this journey. It may also benefit directors/administrators who are wanting to support staff along this process. **PLEASE NOTE: ALL Participants must have access to a computer with Internet access to participate in the Tuesday evening meetings.**

**Presenter Bio:** *Susan Stacey* has worked in the field of ECE for over thirty years as a classroom teacher, ECE Director, practicum supervisor, college instructor, & author. Her particular interests are Emergent Curriculum, pedagogical documentation, & reflective practice. Susan's first book, *Emergent Curriculum in Early Childhood Settings: From Theory to Practice* was published in 2008, & her second book, *The Unscripted Classroom: Emergent Curriculum in Action* was recently released in the spring of 2011.

**\*Responsive Caregiving; Developing Infant & Toddler Program  
Curriculums**

**Date:**  
Saturday November 5,  
2011

*\*Equivalency hours: This workshop has been approved by the NS Department of Community Services for equivalency accreditation of partial fulfillment (5 hours) of section 36.C of the Daycare Act & Regulations.*

**Presenter:** Patricia Monaghan

**Time / Location:** 9am-4pm Rosaria Student Centre room 401 **Cost:** \$40.00 **Total PD hours:** 6 hours

**Description:** This workshop will examine the essential role of the infant/toddler caregiver in providing 'educare', a blending of care & education through respectful, responsive & reciprocal interactions. This interactive workshop will explore the notion of curriculum & its application to the care & development of infant & toddlers. Emphasis will be placed on understanding infant development, designing optimal environments, curriculum in caregiving routines & the importance of relationship building both within & across environments. Issues of inclusion & cultural competency will also be examined.

**Presenter Bio:** *Patty Monaghan* is currently the Infant Toddler Program Coordinator for the Progress Centre for Early Intervention, a resource centre supporting families of young children, birth to school entry, with special needs. She was also previously the Director/Owner of a unique bilingual Mandarin/English child care program & an Assistant Professor with Mount St. Vincent University's Child & Youth Study Department, teaching courses in infant development, early intervention, intervention & evaluation, program development for children with special needs & research methods in child & youth study. Patty is also the co-author of Building Blocks: Strategies for Inclusion, a book & facilitated training program supporting the inclusion of young children with special needs in child care programs.

# Fall 2011 MSVU Professional Development Registration Form

**PLEASE PRINT FULL NAMES AS THEY ARE TO APPEAR ON THE CERTIFICATE OF ATTENDANCE.**

Name \_\_\_\_\_

Home Address \_\_\_\_\_ City/town \_\_\_\_\_ Postal Code \_\_\_\_\_

Home Phone \_\_\_\_\_ Email \_\_\_\_\_ Phone (work) \_\_\_\_\_

Centre/Organization Name \_\_\_\_\_ Centre Address \_\_\_\_\_

City/town \_\_\_\_\_ Postal Code \_\_\_\_\_ Email (Centre/work) \_\_\_\_\_

## HOW TO REGISTER:

1. Make cheque/money order **PAYABLE TO: MOUNT SAINT VINCENT UNIVERSITY**  
(Post dated cheques **MUST** be dated a minimum of 3 weeks **PRIOR** to the workshop date.)

2. Please return completed registration form with payment to:  
**Rhonda Rees, Department of Child & Youth Study**  
**Mount Saint Vincent University 166 Bedford Highway, Halifax, NS, B3M 2J6**

Alternatively, registration & payment may be dropped off to Evaristus Hall, room 342.  
Receipts will be given out in the workshop.

3.. **Registration does not confirm acceptance into the workshop**  
Your registration will be confirmed by email or phone. Please contact us if you do not receive a confirmation / notification, as space may **NOT** be available.

**NOTE: SPACE IS LIMITED IN ALL WORKSHOPS. Please get your registrations in early.**

Participant Name	Workshop Name & Date	Amount Due
	<b>TOTAL ENCLOSED</b>	

***For additional information please contact:***

Rhonda Rees  
Professional Development Coordinator  
Department of Child and Youth Study  
(902) 457-6313 [rhonda.rees@msvu.ca](mailto:rhonda.rees@msvu.ca)

***If you would like to receive a copy of the Professional Development brochure by email,  
please contact [rhonda.rees@msvu.ca](mailto:rhonda.rees@msvu.ca) to sign up.***

**Workshop information & registration forms are also available on our website.**

***<http://www.msvu.ca/earlychildhoodworkshops>***